



WH-25ES/WH-30ES

Scale Pallet Truck

Heavy duty pallet truck with built-in scale

2500/3000kg capacity; 500g division

Electronic indicator with 32mm high red LED display

Four load cells ensure accurate readings in kg or lb



Specification

Capacity: 2500/3000kgs

Fork length: 1150mm

Overall fork width: 540/685mm

Power: 6V/4Ah rechargeable battery

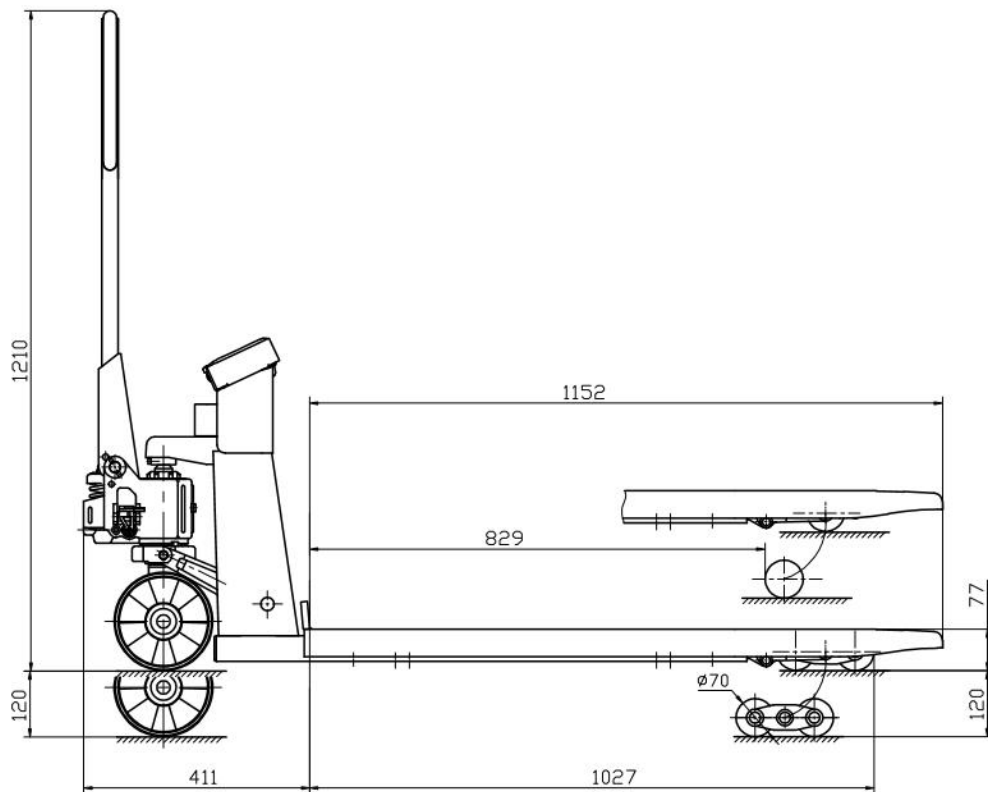
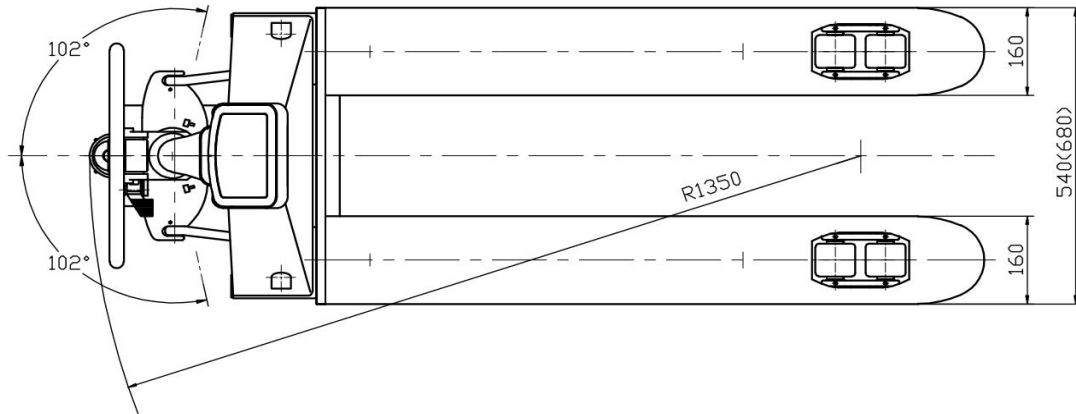
Charger: External

Weight: 125kg

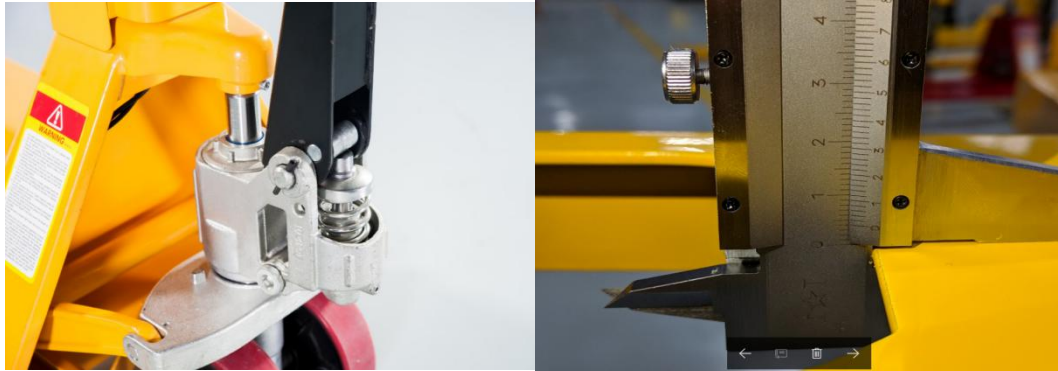
Well designed structure

Standard 540/680mm fork width (rather than 570/700mm)

Low profile 77mm min. fork height



Casted galvanized pump
Durable forks made from 4mm thickness steel



4 load cells inner weighing structure



Accurate weighing up to 2500/3000kgs

Up to 2500kg or 3000kg, readings in kg or lb.

4 built-in load cells ensured accuracy.

Accuracy 1‰

High Precision multi-function LED screen

7 function keys, simple and convenient operation.

6-digit 32mm LED display, 7 state indicator lamps.

Long service life and shock resistance.

Automatic screen protection and automatic shutdown energy-saving function.

Tare / Hold / Accumulation (of pallet weight) / Counting mode / Unit switchable

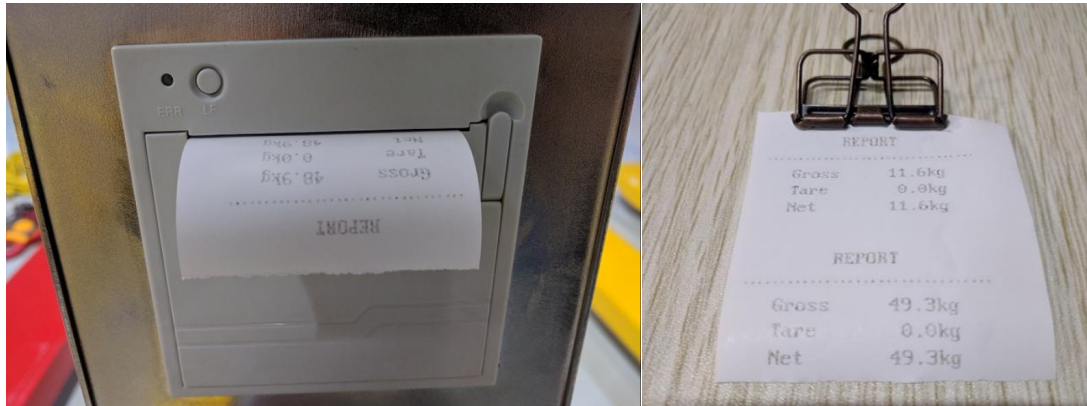


Long life internal battery

Rechargeable 6V/4Ah battery, 40 hours operation.

Printer Option

Built-in printer with rich printing formats and communication protocol.



Accumulation data print out

REPORT	

1	0.200kg
2	0.175kg
3	0.347kg
4	0.375kg

Total:	1.097kg

Count data print out

REPORT	

Gross:	0.547kg
Amount:	55

Weight data print out

REPORT	

Gross:	45.0kg
Tare:	5.0kg
Net:	40.0kg

Fully Stainless version

Fully 306 Stainless material, suitable for food, chemical industrial etc.

